

Community Update

REGIONAL PLANNING INITIATIVE

December 2023

Greater Mankato 2040 | Transforming Tomorrow Together



Greater Mankato 2040 (GM2040) is a planning and visioning project **exploring the future** of the Greater Mankato Region. This project is about **coming together** as a region and **building a vision and roadmap** for 2040.



SUPPORTING PARTNERS

[Home](#) » [Greater Mankato 2040](#) » [About](#) » [Supporting Partners](#)

The Transforming Tomorrow Together – Greater Mankato 2040 initiative is a true collaborative initiative, with large support by four regional partners.



Supporting partners to date

GM2040 Community Update

Update on progress to date

- Review work to date and what we have learned.
- Better understand what a regenerative and synergistic region means.
- Understand barriers to change and transformation.

TODAY





WELCOME TO
TRANSFORMING TOMORROW TOGETHER
Greater Mankato 2040

The Importance of Future Thinking

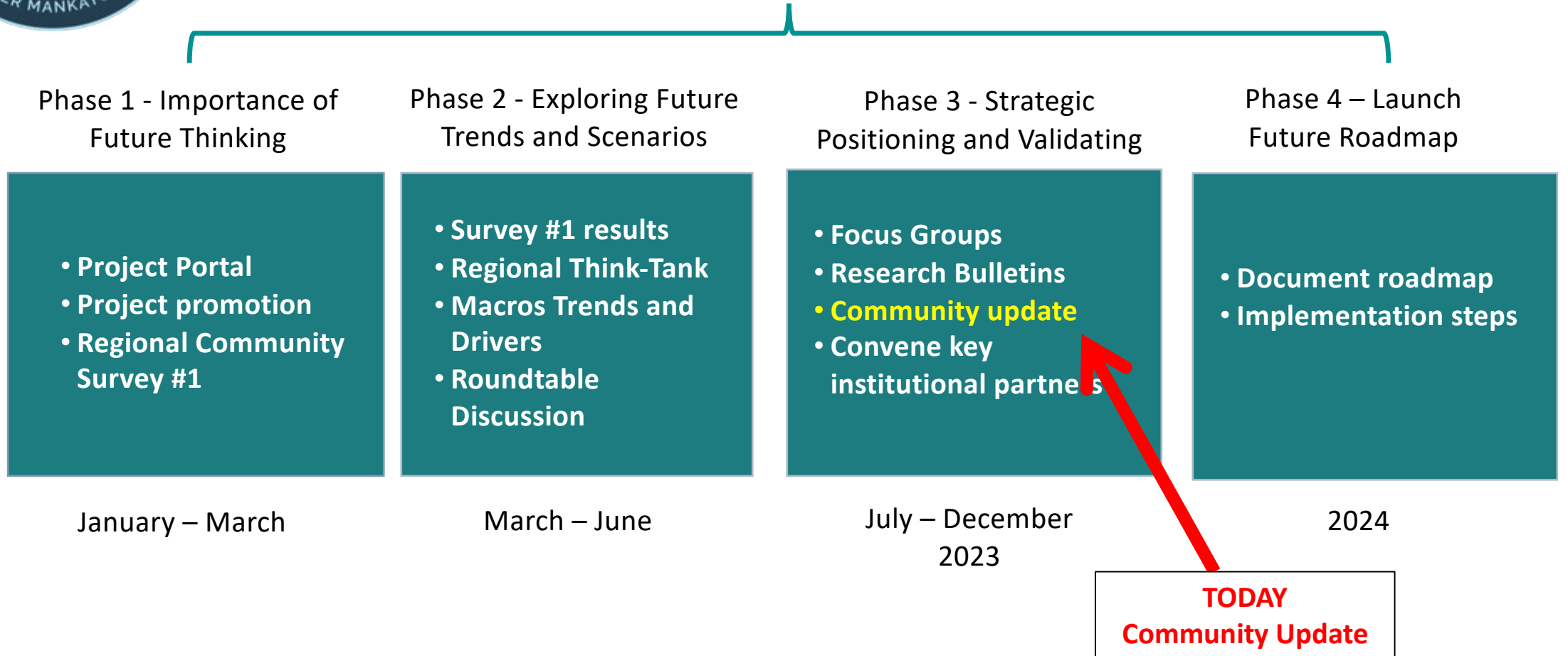
The key to effective future thinking...

Consider both **trajectory** (direction of change)
and **velocity** (speed of change).



OVERALL SUMMARY TIMELINE

Project stages and opportunities to engage



GM2040 Community Survey #1

Review
results



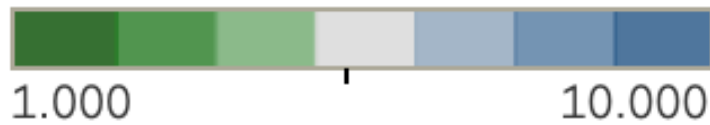


Primary area of collaboration – one hour radius



Shared regional vision, values and plan

Importance of shared regional plan



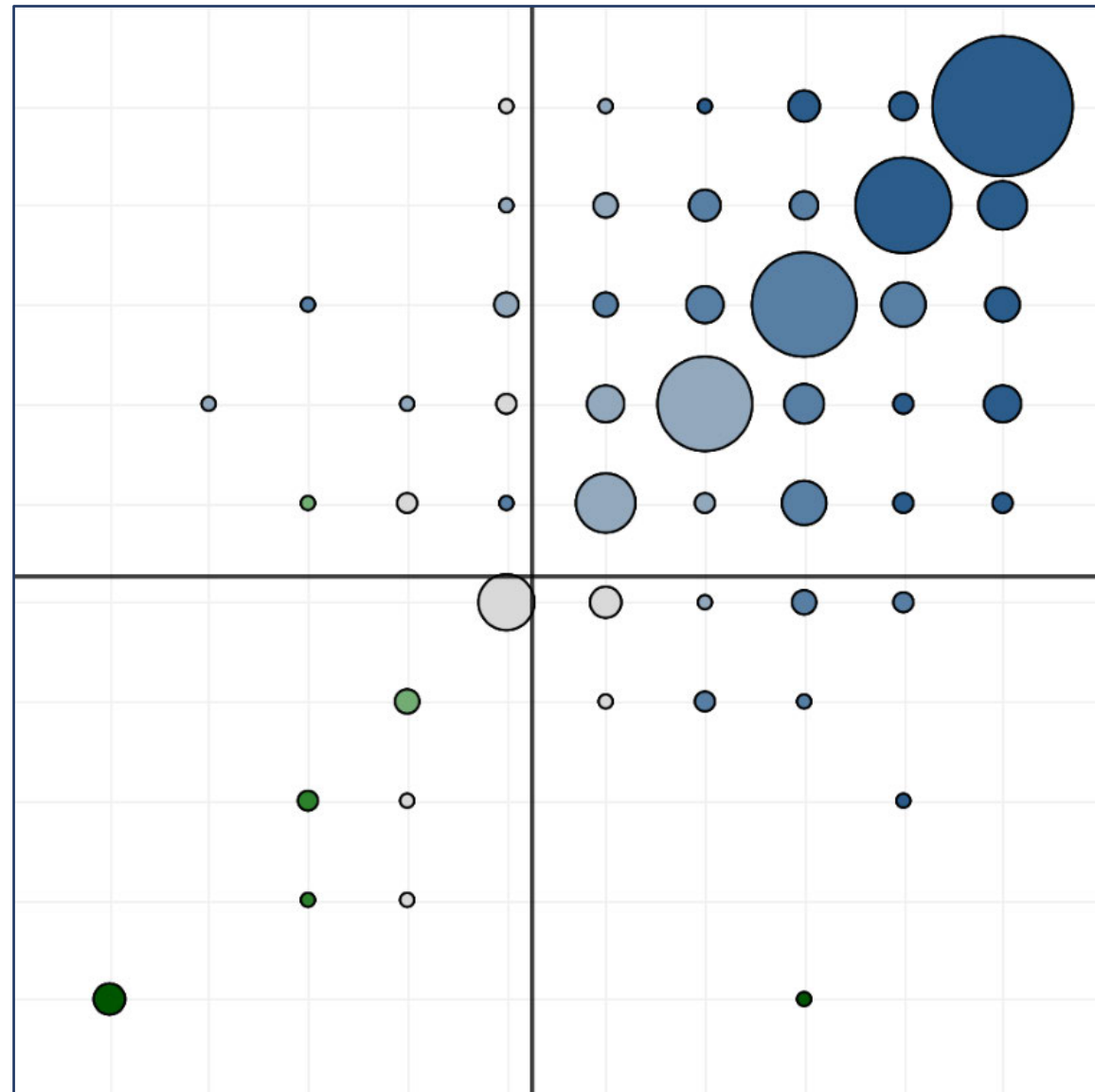
Very important



Importance of shared regional values



Not important



Importance of shared regional vision

Very Important

Living and Working in the Greater Mankato Region



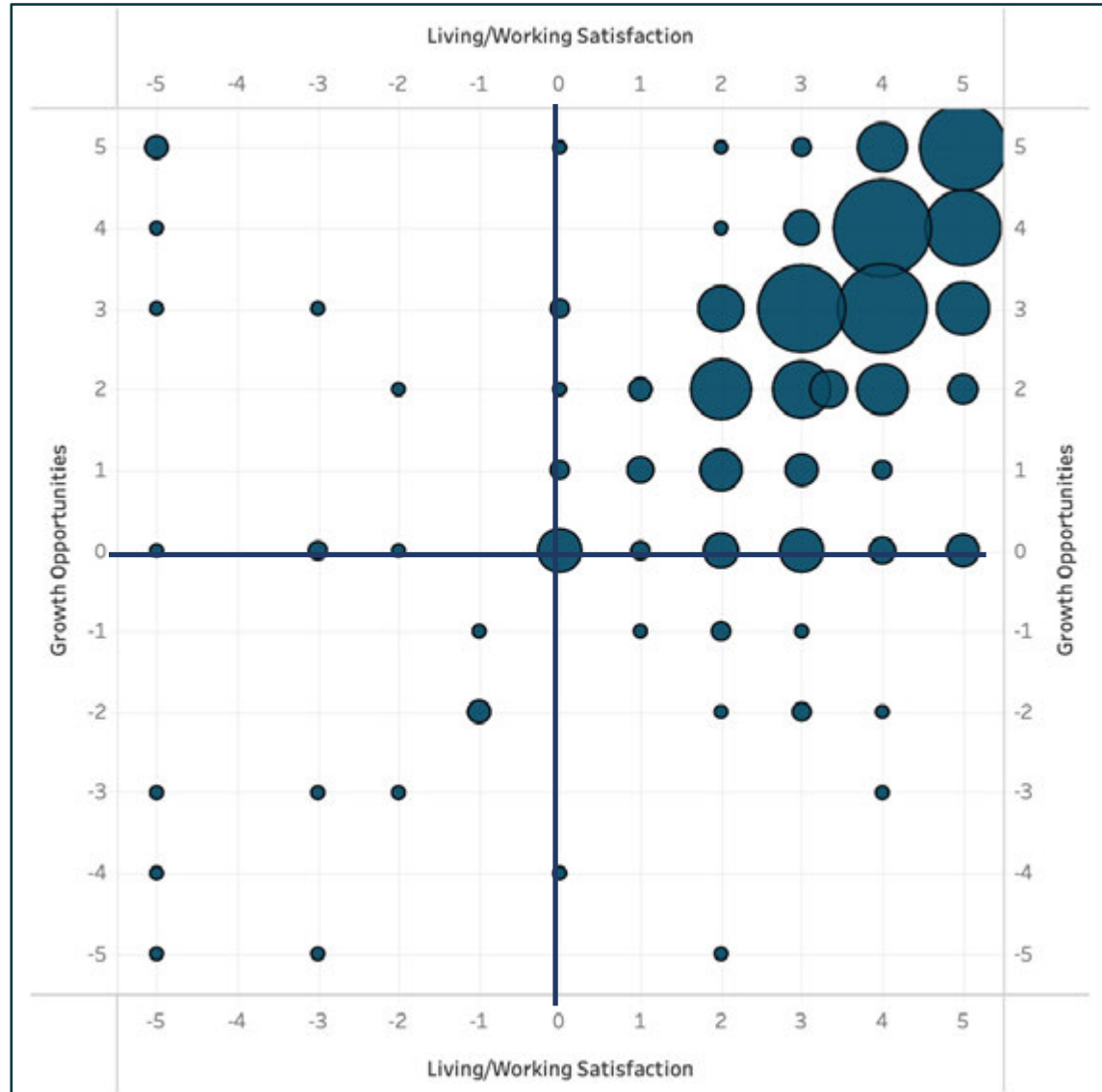
Fantastic future opportunity



Growth opportunities



Very little future opportunity



Very unsatisfied



Living / Working Satisfaction



Very satisfied

Current Direction and Performance



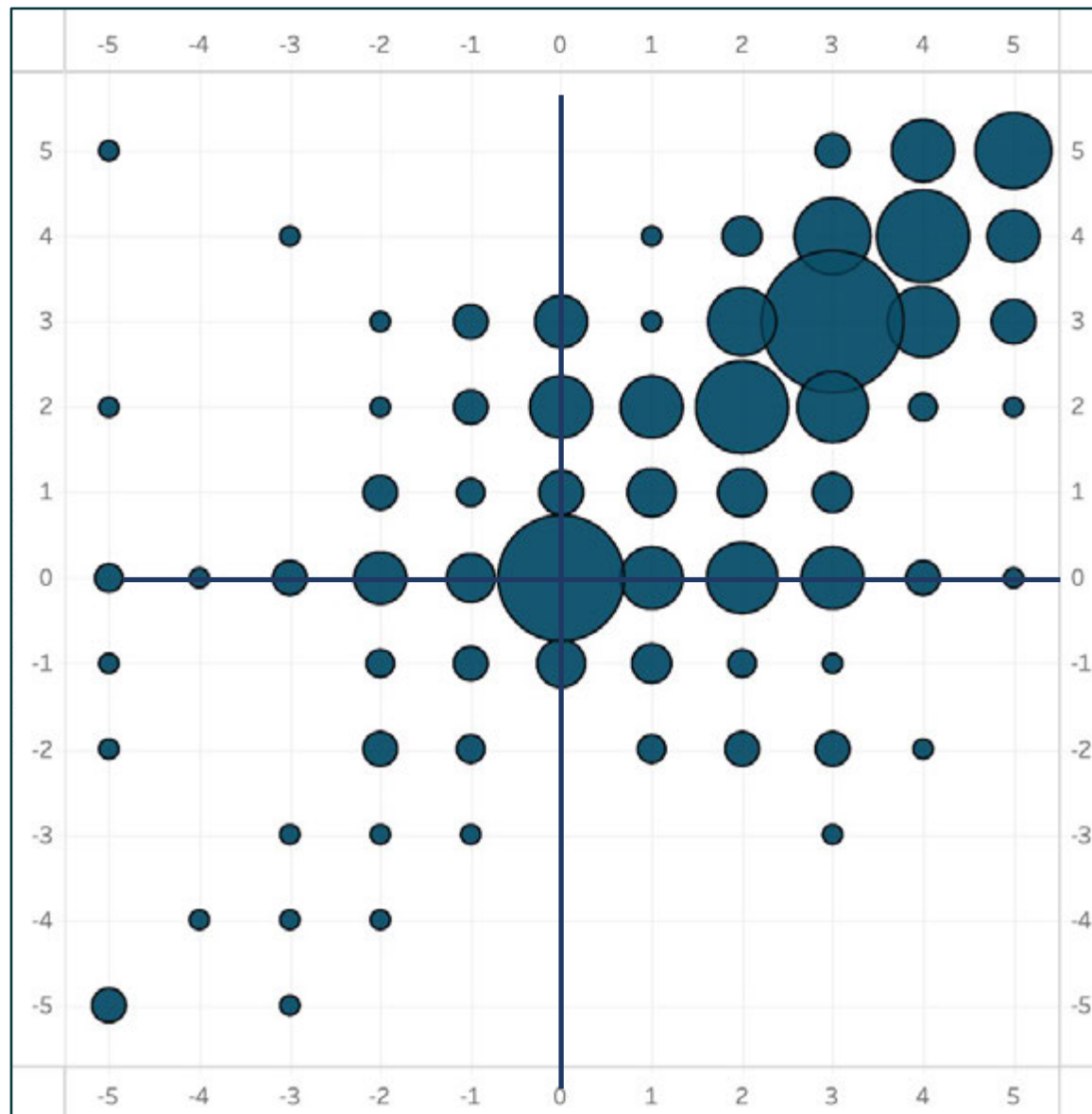
Very satisfied



Relative performance



Very concerned



Current Direction



Very satisfied

Future Relevance and Importance of the Region

Importance to National Future



1.000

10.000

Not important

Very Important



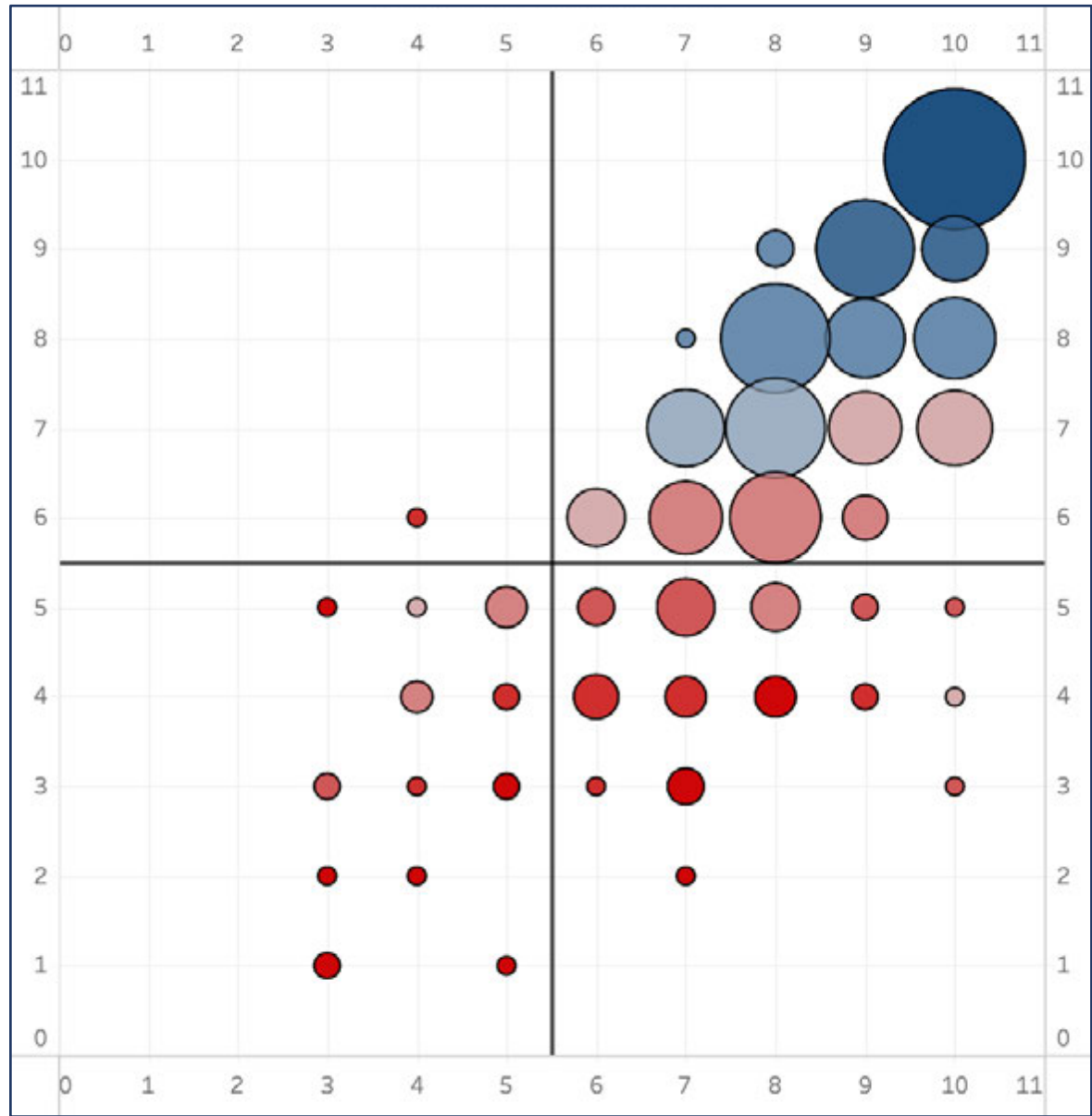
Very important



Importance to the future of upper Midwest



Not important



Importance to the future of Minnesota

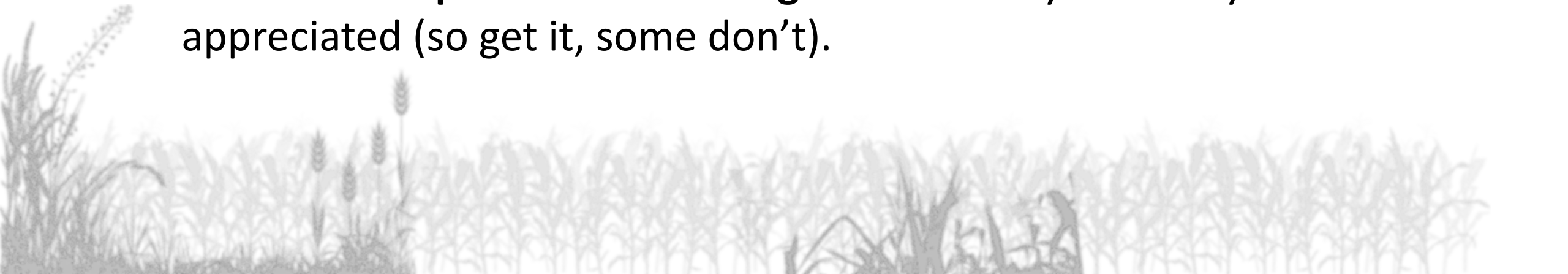
Very Important





What we learned

- Envision 2020 work was successful, and people understand the **importance of vision and shared planning**.
- People are 'by-and-large' **contented and satisfied**.
- The region is doing well – but is **not uniquely outstanding**.
- Not everyone understands the 'regional approach' but seem willing to give it a try.
- The future **importance of the region** is not fully or widely appreciated (so get it, some don't).



GM2040 – Future Think-Tank



Part 1 – Explore Future Trends

- Macro trends shaping the future
- Key drivers shaping the future
- Rating future impact of drivers

Part 2 – Build regional scenarios

- Develop plausible scenarios of the future
- Identify expected and preferred futures
- Build strategic pillars

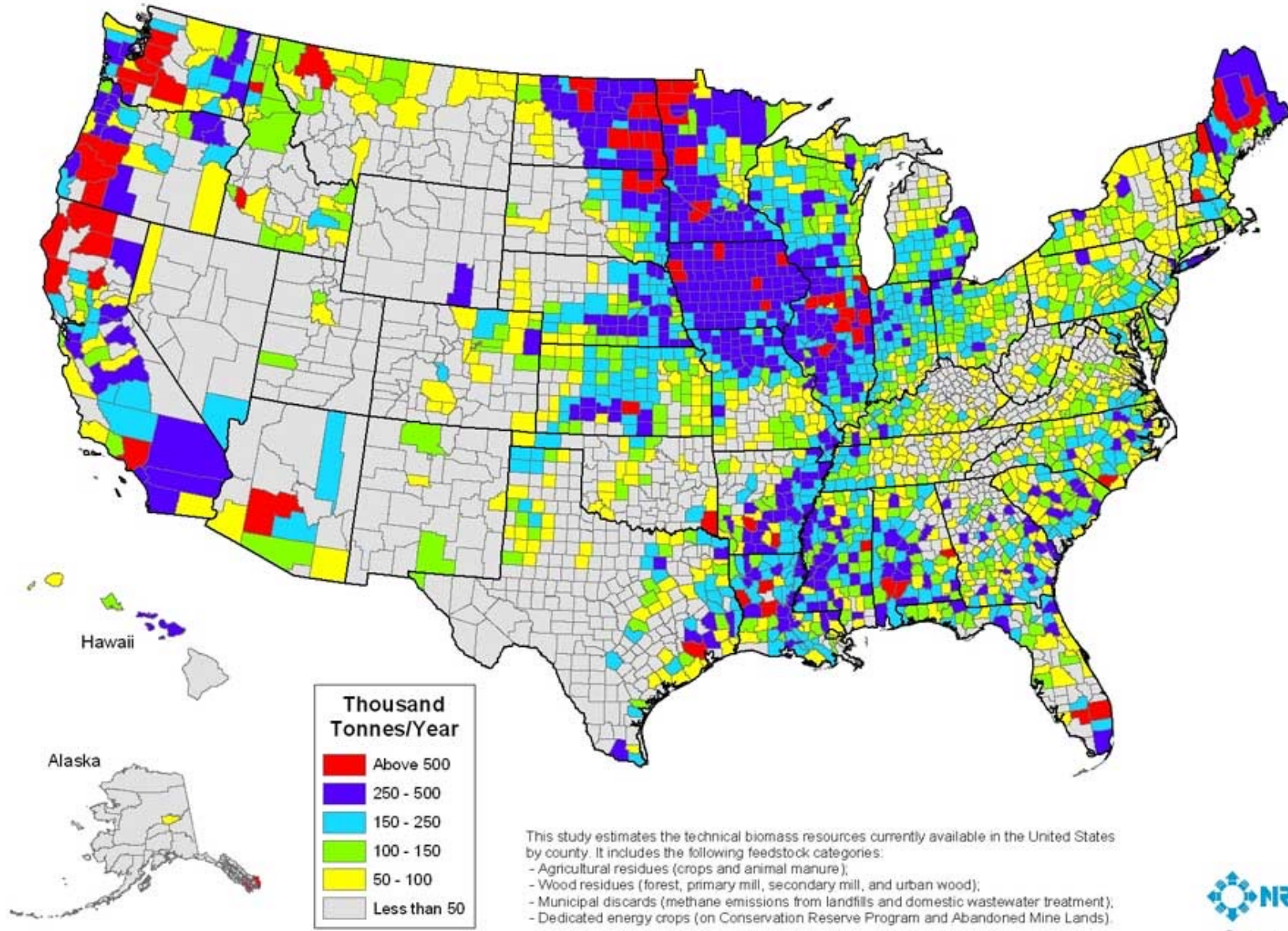
April 14

April 28

Future Fridays



Biomass Resources Available in the United States



**Unique
biomass
capability**

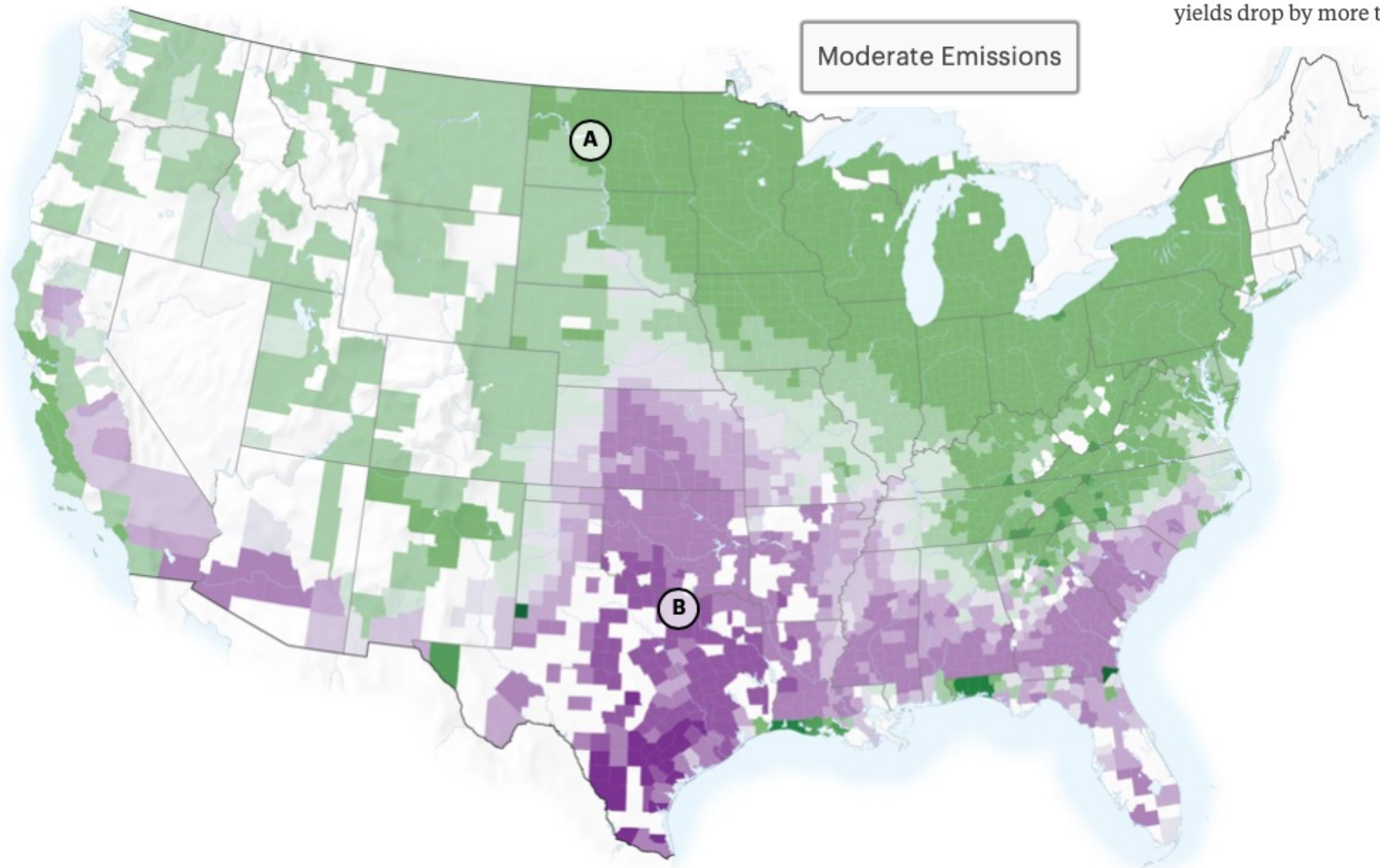
**Upper Midwest
bioeconomy likely to be
more globally significant
over coming decades**



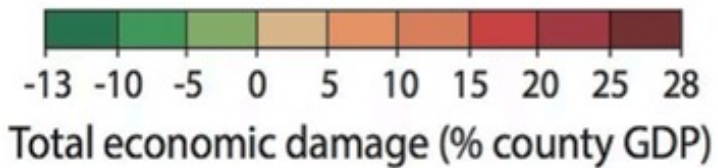
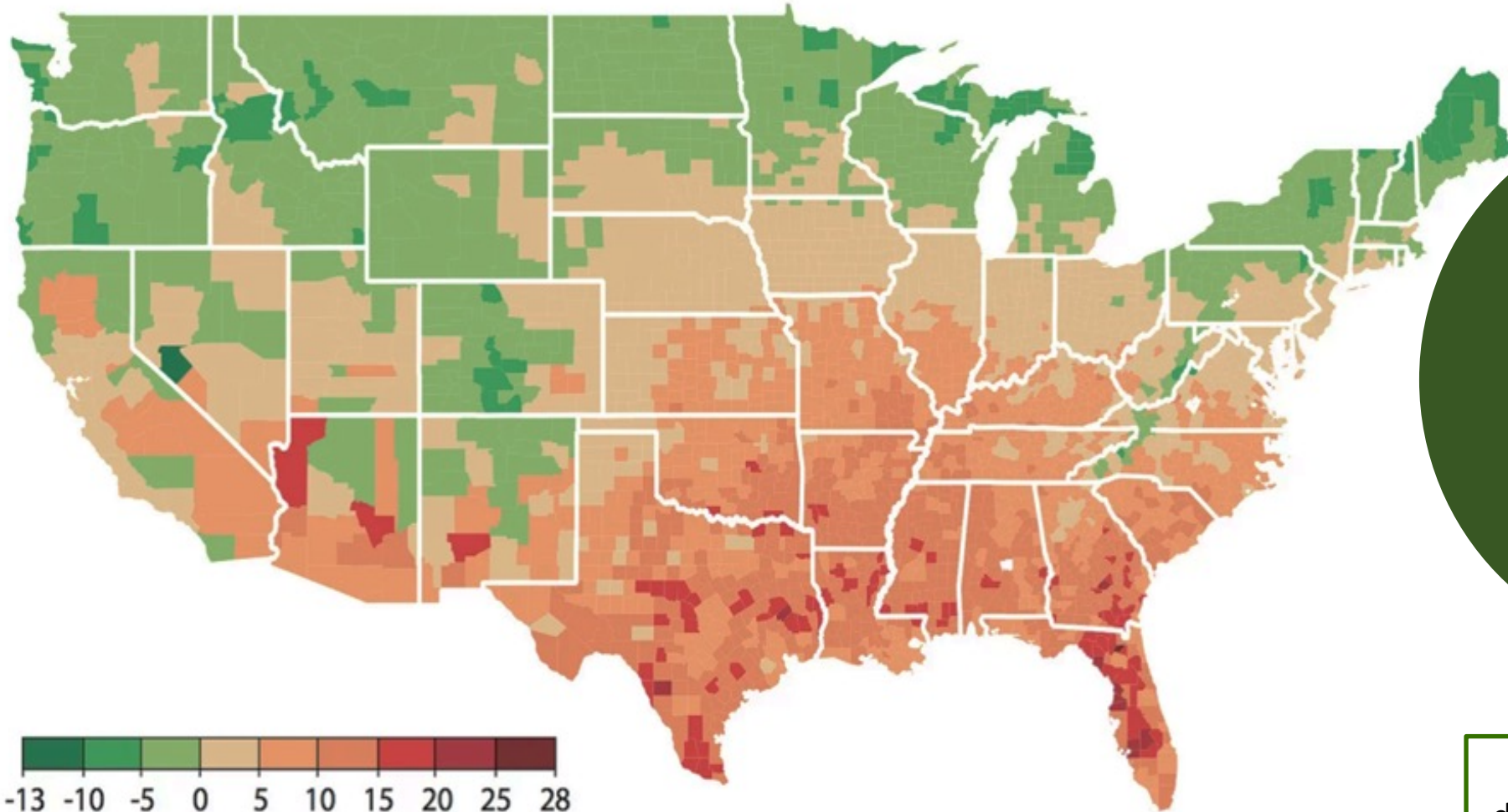
September 2005



Farm Crop Yields: 2040-2060



Corn and soy production is more sensitive to heat than drought, and it will decrease for every degree of warming. By midcentury, North Dakota (A), which already harvests millions of acres of both crops, will warm enough to allow for more growing days and higher yields. But parts of Texas and Oklahoma (B) may see yields drop by more than 70%.



**Long term
GDP impact
positive in
north**

**Climate change may
drive migration patterns
within US may move to
'north', and from 'west
to center'**

Potential economic damages are shown at the county level in a scenario in which emissions of greenhouse gases continue at current rates. Green indicates areas that could see economic benefits. To see an interactive version of this map, click [here](#).

Hsiang, Kopp, Jina, Rising, et al./Science

Source: [Christopher Joyce, MPR News, June 29, 2017](#)

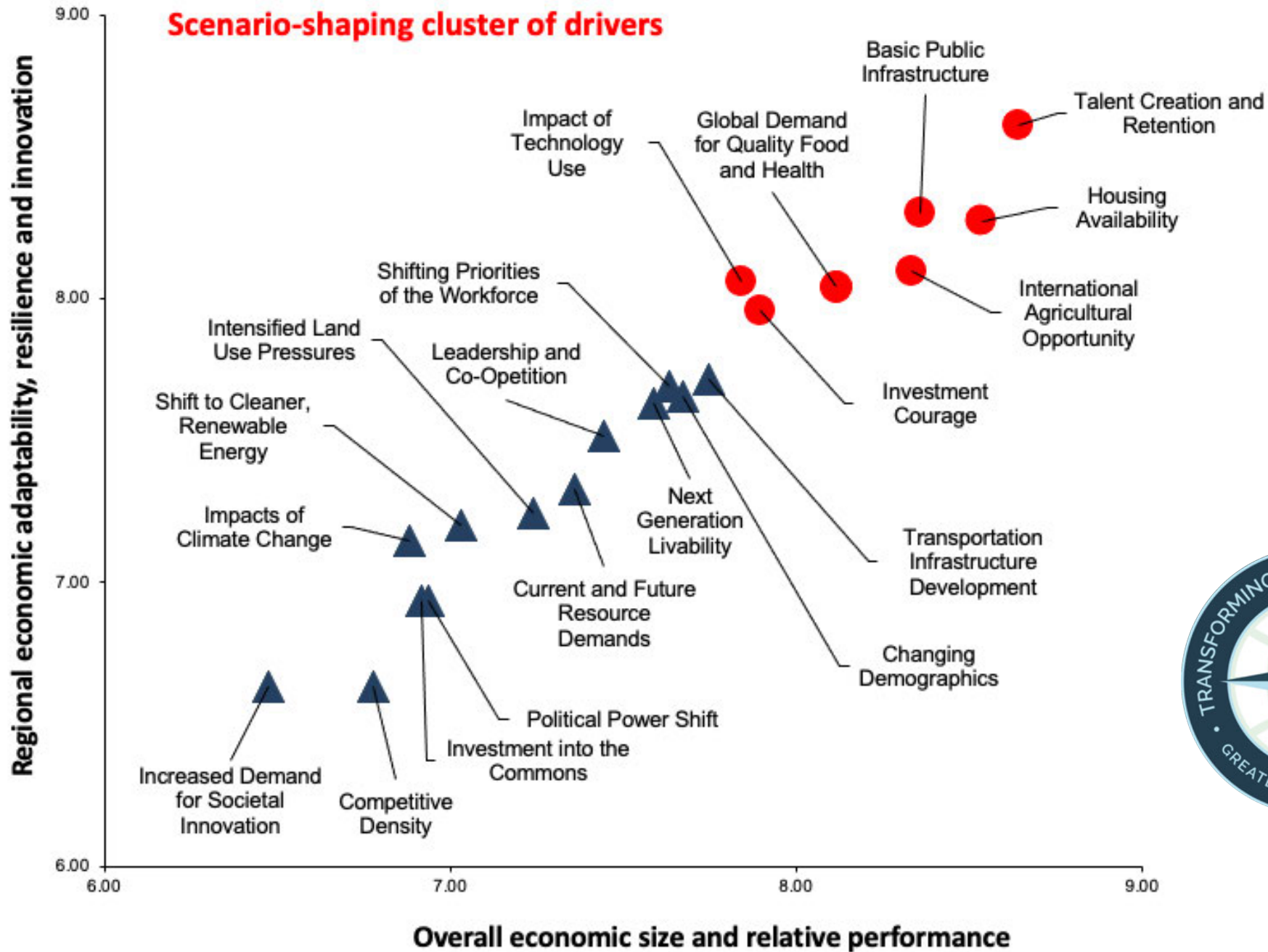
Key Drivers – [list developed in Think-Tank]

1. International Agricultural Opportunity
2. Changing Demographics
3. Impacts of Climate Change
4. Intensified Land Use Pressures
5. Political Power Shift
6. Current and Future Resource Demands
7. Talent Creation and Retention
8. Investment Courage
9. Investment into the Commons
10. Shift to Cleaner, Renewable Energy
11. Impact of Technology Use
12. Transportation Infrastructure Development
13. Shifting Priorities of the Workforce
14. Next Generation Livability
15. Competitive Density
16. Leadership and Co-Opetition
17. Increased Demand for Societal Innovation
18. Global Demand for Quality Food and Health
19. Housing Availability
20. Basic Public Infrastructure

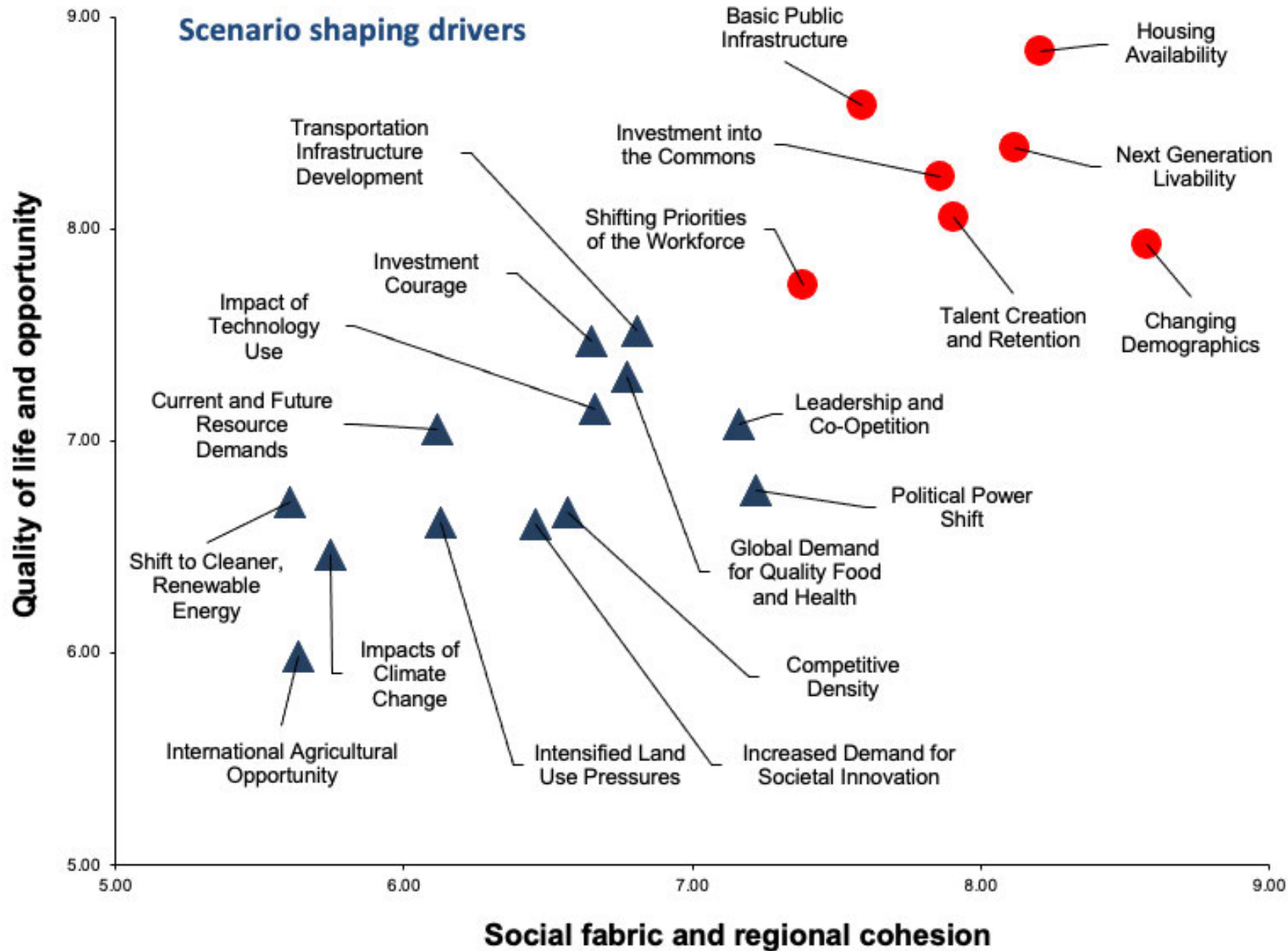


Economic approach

Scenario-shaping cluster of drivers



Community adaptation



Future-splitting themes – based on clusters of drivers

Economic approach

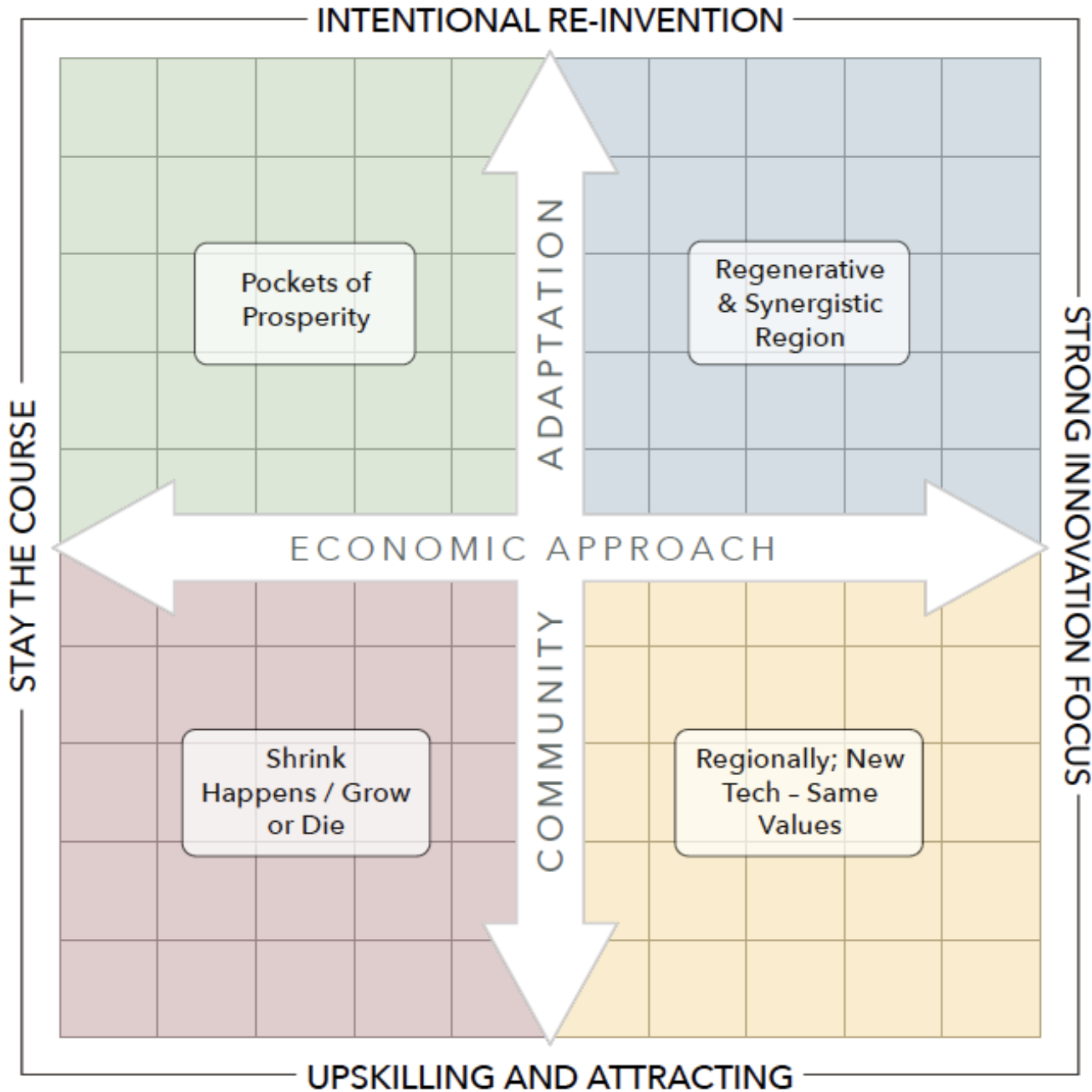
- Talent creation and attraction
- Housing availability
- Basic public infrastructure
- Global demand for quality food and health
- International agricultural opportunity
- Impact of technology use
- Investment courage

Community adaptation

- Housing availability
- Next generation livability
- Changing demographics
- Basic public infrastructure
- Investment into commons
- Talent creation and retention
- Shifting priorities of the workforce

Key drivers were clustered under future splitting themes – based on data in scatter plot. There are part of the data set used to formulate the scenario matrix

Scenarios of the future Greater Mankato 2040



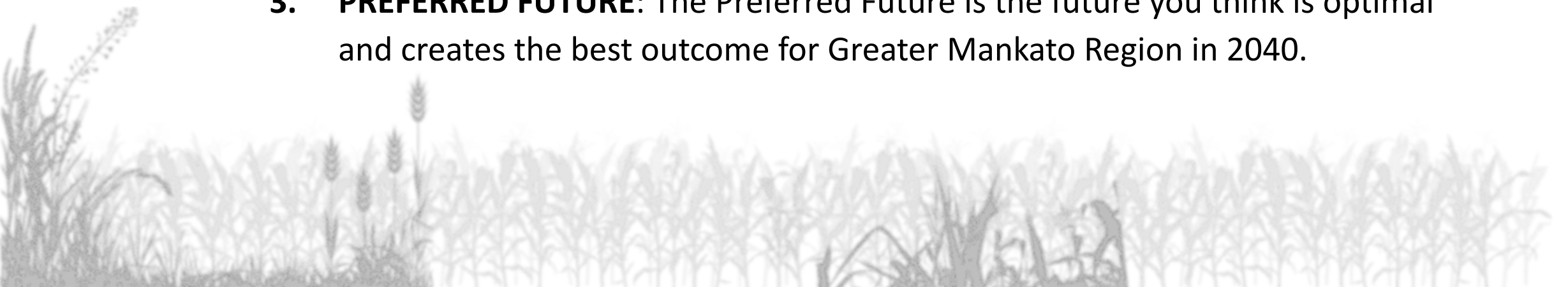
Greater Mankato 2040

Expected, Preferred and Least Desirable Futures

Heatmaps

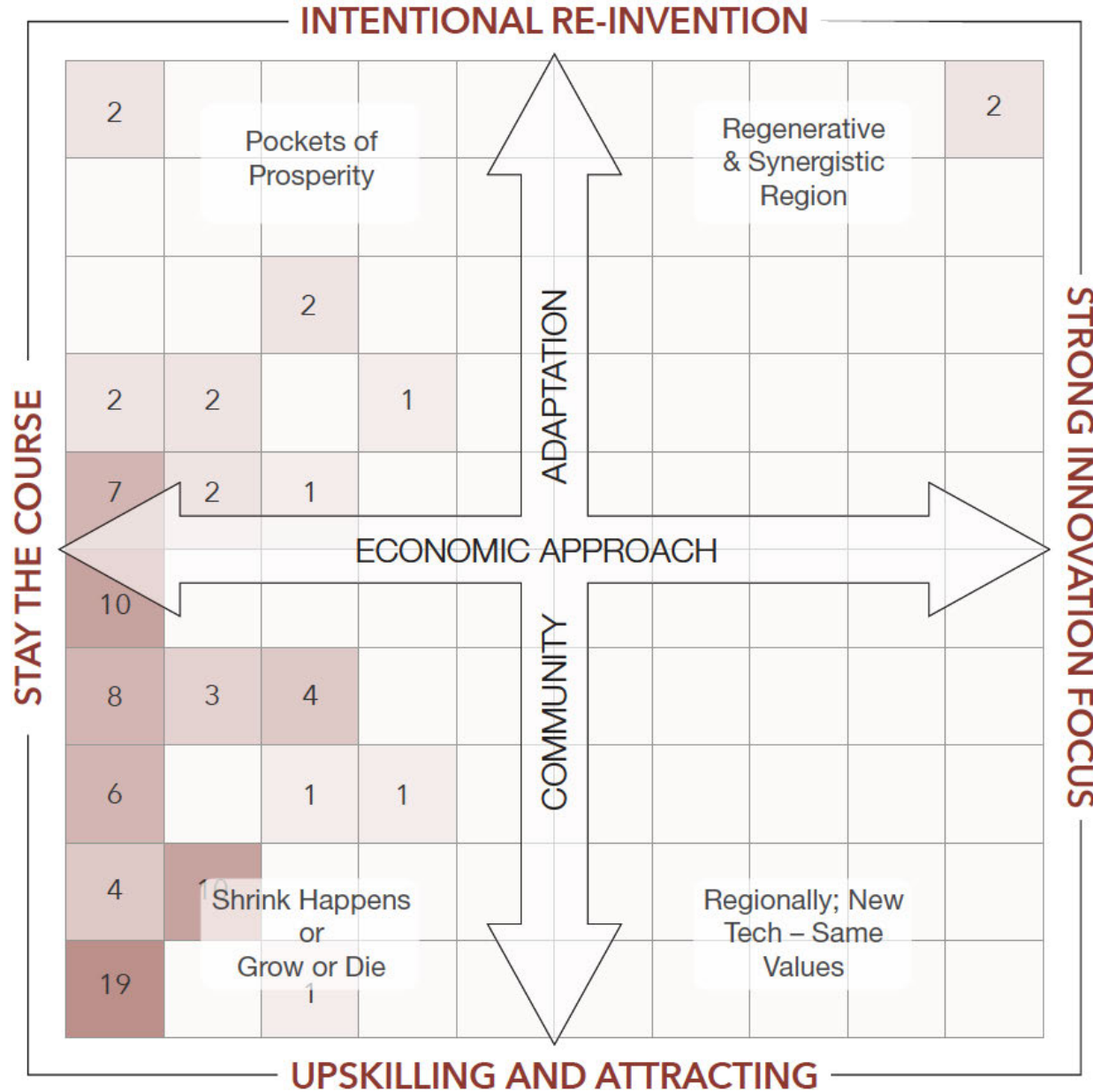
Expected, Preferred and Least Desirables of the Future – What do you think?

- 1. LEAST DESIRABLE FUTURE** - The Least Desirable Future is the future that you think will be most undesirable (or least optimal or least desired) future in 2040.
- 2. EXPECTED FUTURE:** The Expected Future is the future you expect most likely to eventuate by 2040, if existing trends and trajectory persists.
- 3. PREFERRED FUTURE:** The Preferred Future is the future you think is optimal and creates the best outcome for Greater Mankato Region in 2040.



GREATER MANKATO 2040

LEAST DESIRED FUTURE



LEAST DESIRED FUTURE PLAUSIBILITY MATRIX

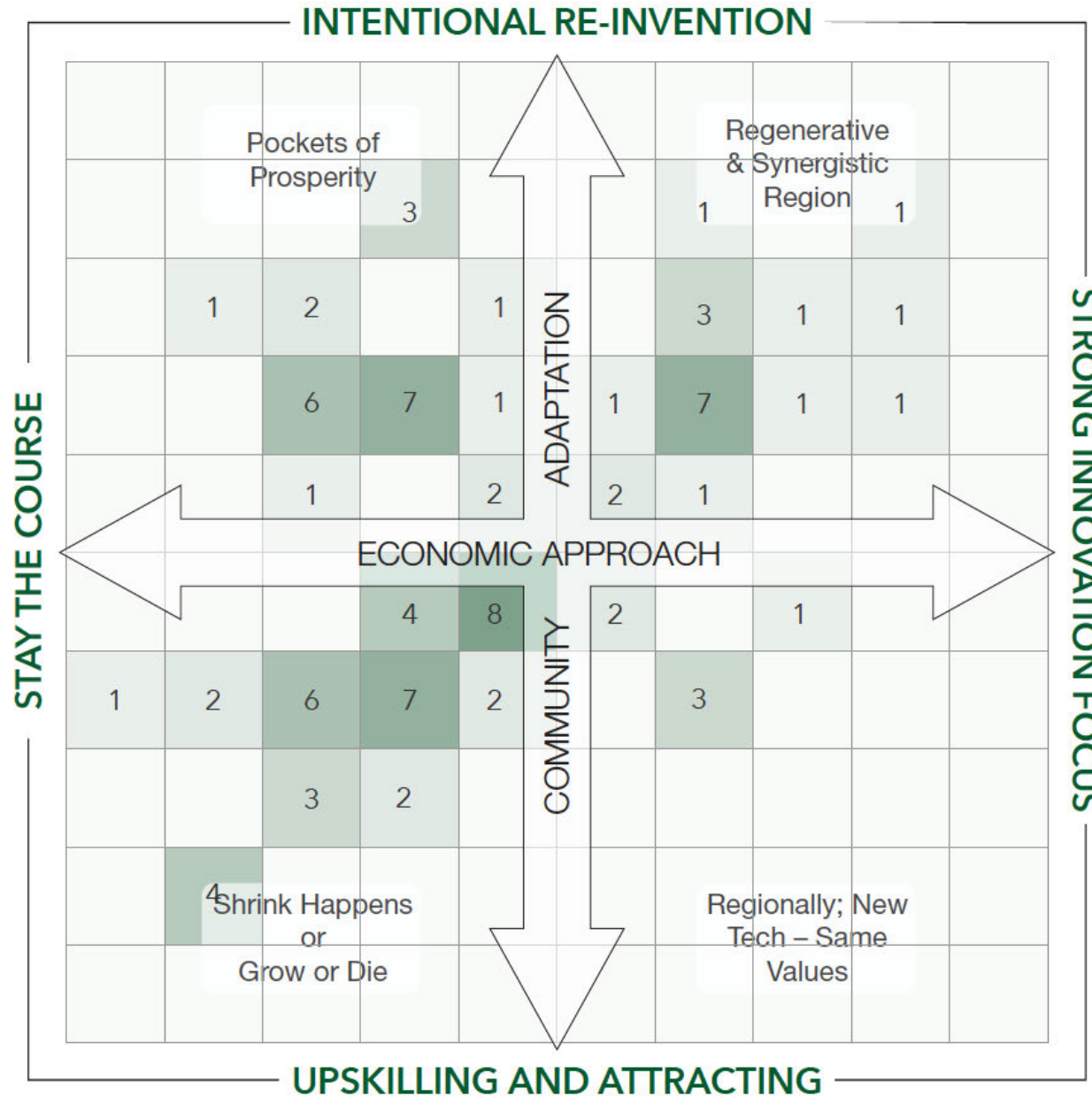
This grid displays the plausibility level assigned by the workshop participants.

The darker the color, the greater the aggregate weighted plausibility score.



GREATER MANKATO 2040

EXPECTED FUTURE



EXPECTED FUTURE PLAUSIBILITY MATRIX

This grid displays the plausibility level assigned by the workshop participants.

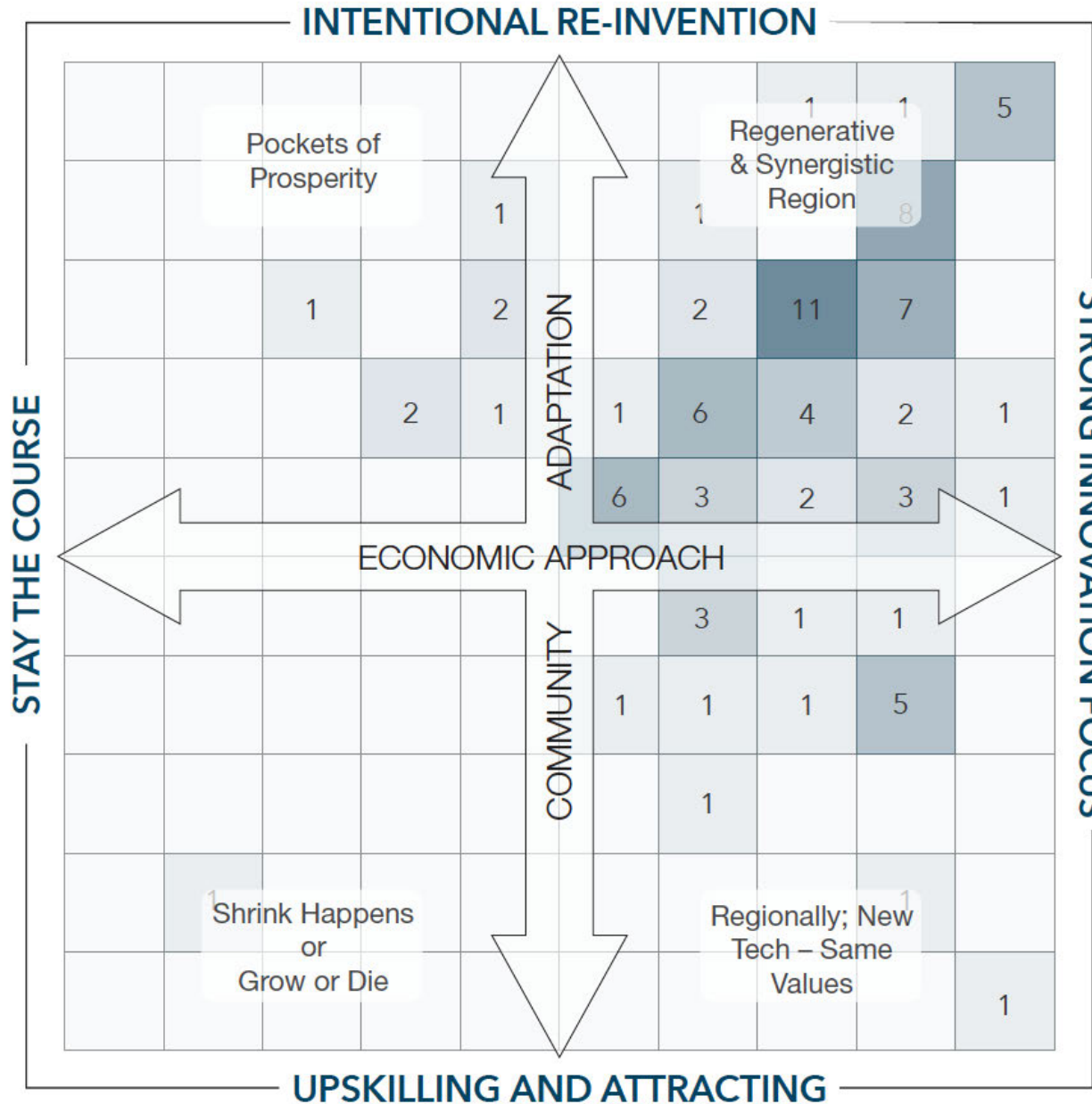
The darker the color, the greater the aggregate weighted plausibility score.



future*→*iq
 Create Future Intelligence
www.future-iq.com

GREATER MANKATO 2040

PREFERRED FUTURE



PREFERRED FUTURE PLAUSIBILITY MATRIX

This grid displays the plausibility level assigned by the workshop participants.

The darker the color, the greater the aggregate weighted plausibility score.



future*→*iq
 Create Future Intelligence™
www.future-iq.com

Regenerative and synergistic region

In the 'Regenerative and Synergistic' scenario, communities in the region collaborate and share innovation. Human and environmental wellbeing are the drivers of the regional transformation.

- There is investment in the 'Commons'.
- Housing density increases to minimize sprawl and provide options for both youth and an aging population.
- Educational options expand to keep up with workforce demands.
- Connectivity is key to inclusivity and public transit becomes regional.
- Green spaces are preserved, and the river becomes a regional focal point.
- Water is recognized as a key asset, and environmental sustainability measures are enacted.
- Anticipating the growing role of the region in global agricultural output, agriculture becomes regenerative.
- Innovation in all industry areas is turbo-charged and enabled by automation and technology.

GM2040 Regional and Community Roundtable Day

Began action planning

- Worked in breakout groups on Roundtable topics
- Prioritized actions

May 19

Future Fridays



GM2040 Regional and Community Roundtables

Regenerative and synergistic region

*(Think strategic future positioning
of the region)*



1. Strengthen regional community collaboration and synergy
2. Stimulate innovative housing solutions
3. Create an inclusive, diverse culture and population
4. Create the region as a 'human talent-hub'
5. Build future-orientated community amenities
6. Create a healthy and happy regional community
7. Build a future ready regional culture
8. Boost regional reputation and relevance
9. Foster sustainability and regenerative practices
10. Drive evolution of transportation systems
11. Create the region as an entrepreneurial magnet
12. Build investment courage and appeal
13. Build regional industry collaboration and synergy
14. Become a leading bioscience and bioeconomy innovation center

What we learned



- **Big appetite for change** in the workshops.
 - **Transformation on multiple dimensions** – leaning strongly into emerging societal trends and values.
 - Strong focus on evolving to become a **significant identifiable regional center** with great amenities and livability – a **significant hub** in the MN landscape.
 - Recognition of the need to be forward looking and future-ready, however, somewhat a **default to be inward or insular looking** – difficult to sustain the larger strategic positioning perspective.
- *[Envision 2020 - “Fulfilling work generates prosperity and global capabilities and connections, creating solutions for our region, the nation, future generations and the world”.]*

GM2040 Focus Groups

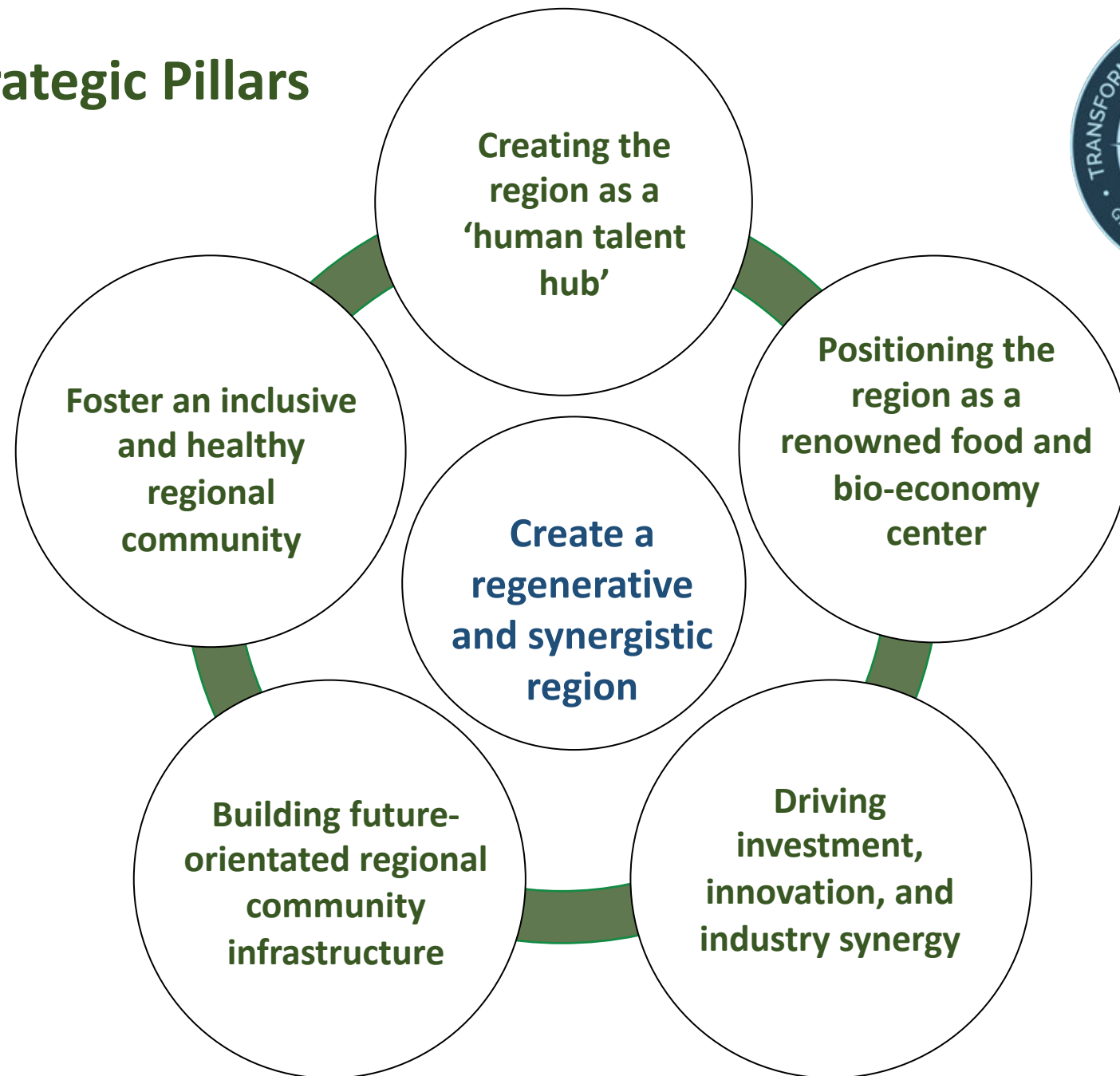
Validate and test Strategic Pillars

- Explored reactions to the pillars and future ideas
- Assessed the set of pillars and their focus

Sept – Dec



Strategic Pillars



What we learned

- **Regenerative and synergistic** concept not so easy to absorb.
- The pillars mirror the **complexity of the future**, and the depth and breadth of challenges and change. Pillars are inter-dependent and connected.
- Lots of interest in the **'human talent hub'** concept, as well as **inclusive and healthy regional community** (especially for young people).
- **Food and agriculture (bio-economy)** is a key regional driver, but not widely appreciated – nor is the external view that the region is an existing epicenter.
- There is greater **depth and diversity** in the economy than most people appreciate (example manufacturing and energy cluster).



GM2040 Community Update

Our work today!

- Exploring what a 'regenerative and synergistic region' means
- Considering the barriers to change and transformation



What does regenerative and synergistic mean?

- **Regenerative** is emerging as a broad direction of social interest and preference. In this perspective, there is greater awareness of living ecosystems, and the potential for systems to co-exist and co-evolve, rather than one at the expense - or at a different pace - than others. Focus is on healthy humans, ecosystems and planet.
 - *Envision 2020 focused on the enhancement of human potential and sustaining the natural, cultural and spiritual resources.*
- **Synergistic** is “Relating to the interaction or cooperation of two or more organizations, substances, or other agents to produce a combined effect greater than the sum of their separate effects.”



Table Discussion #1

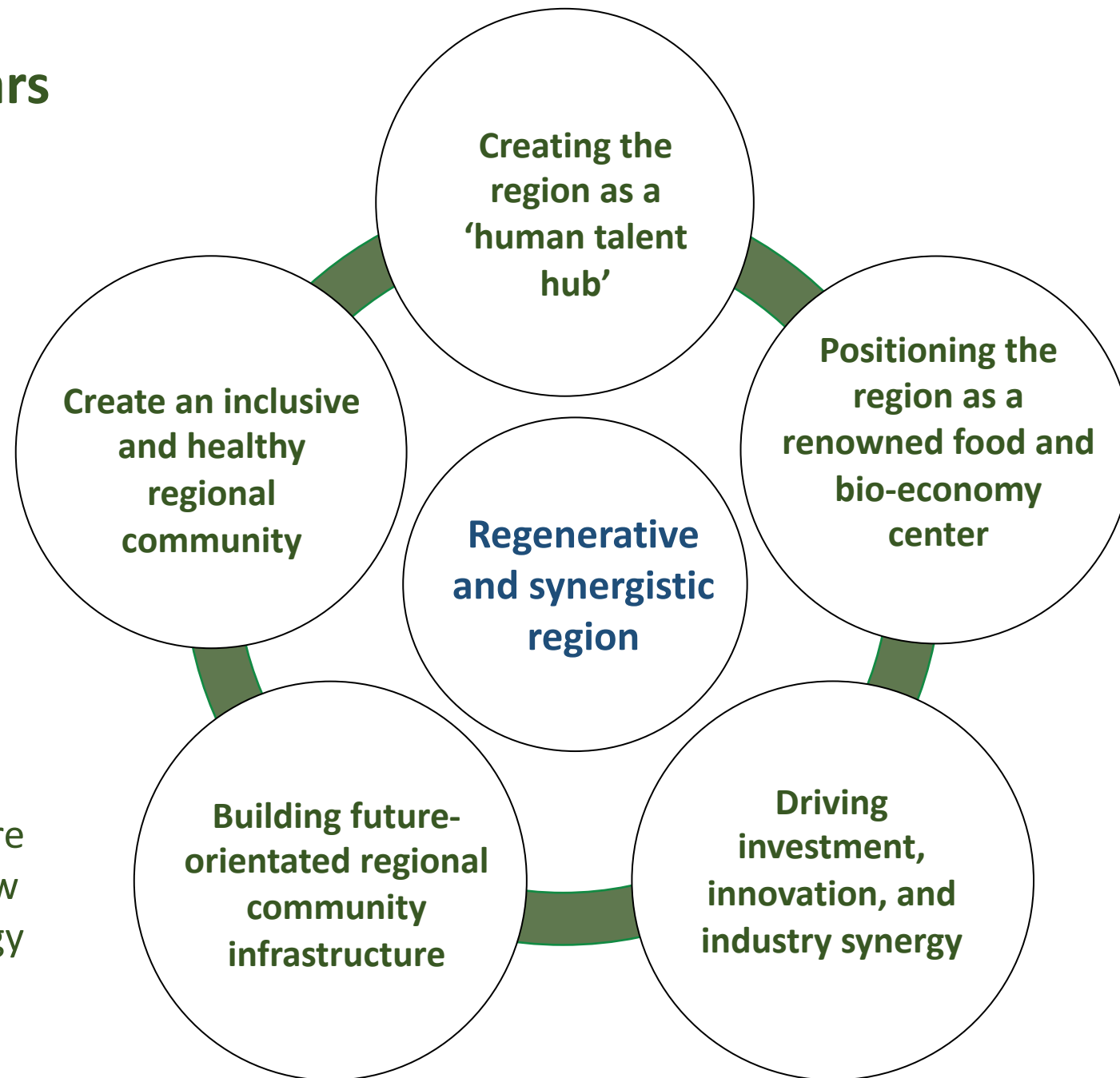
How can the strategic pillars connect / interconnect to create a 'regenerative and synergistic' region?

[Think bold and transformative]

Table
discussion



Strategic Pillars



Understanding the interconnected nature of the pillars and how they can drive synergy

Table Discussion #2

What might be some of the barriers to bold change and transformation in the Greater Mankato Region, and how do we overcome these?

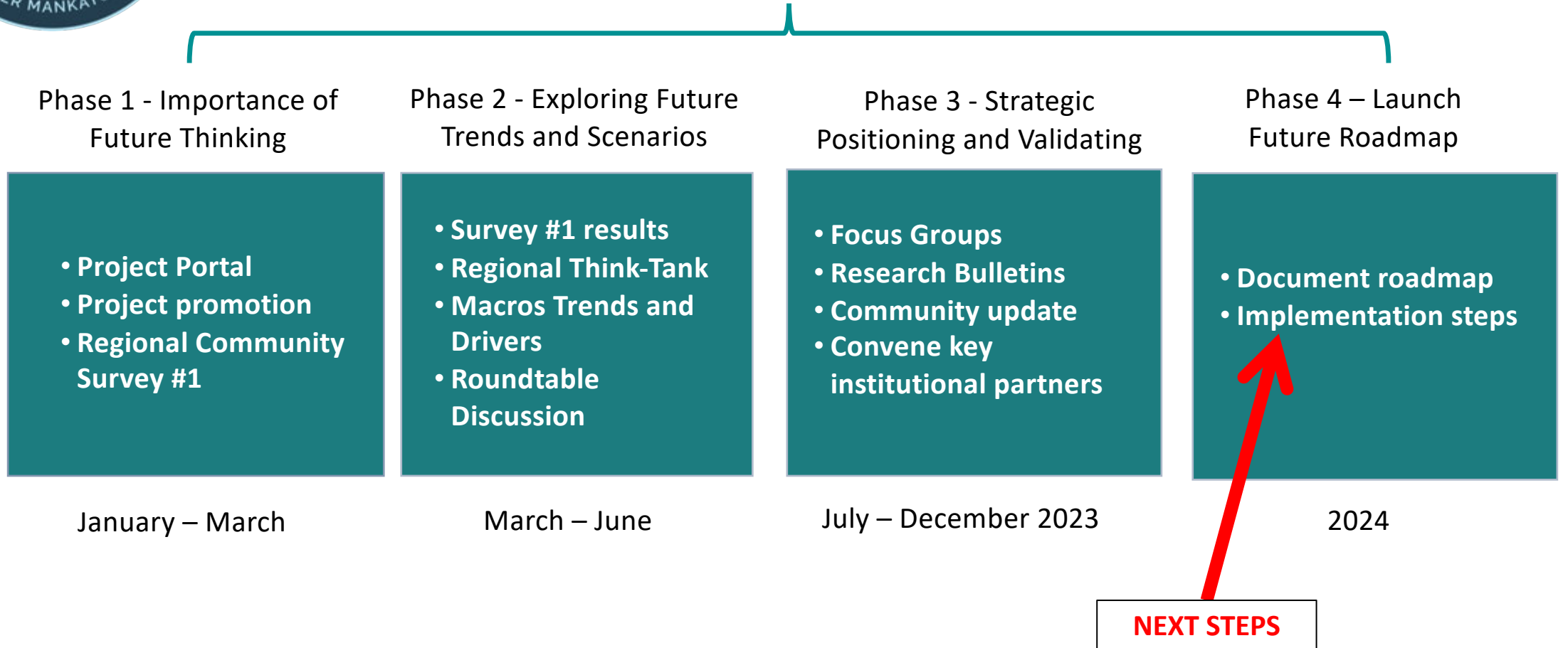
Table
discussion





OVERALL SUMMARY TIMELINE

Project stages and opportunities to engage



THANK YOU!

Greater Mankato 2040 | Transforming Tomorrow Together



Greater Mankato 2040 (GM2040) is a planning and visioning project **exploring the future** of the Greater Mankato Region. This project is about **coming together** as a region and **building a vision and roadmap** for 2040.